

# Red House® Ladies 3/4-Sleeve Nailhead Non-Iron Shirt. RH690



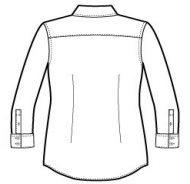
Thoroughly updated, this crisp nailhead shirt has a silky feel and a wrinkle-resistant finish for exceptional non-iron performance. 4-ounce, 60/40 cotton/polyester with pucker-free taped seams and RH engraved buttons to elevate the office-ready look. Open collar, covered placket. Front and back darts. Two-button cuffs.

**CARE INSTRUCTIONS**

Machine wash cold with like colors, only non-chlorine bleach when needed, tumble dry low, warm iron if needed.



front



back

**HOW TO MEASURE**



**BUST**  
Measure under the arm and around the fullest part of the bust with arms down, keeping tape horizontal.

**SIZE CHART**

	XS	S	M	L	XL	XXL	3XL	4XL
Size	2	4/6	8/10	12/14	16/18	20/22	24/26	28/30
Bust	32-34	35-36	37-38	39-41	42-44	45-47	48-51	52-55

**COLOR INFORMATION**

					
Black PMS NTR BLACK C	Blue Pearl PMS 7451C	Ice Grey PMS NO MATCH	Mediterranean Blue PMS 7687C	Pink PMS 517C	White PMS WHITE